

Torfaen

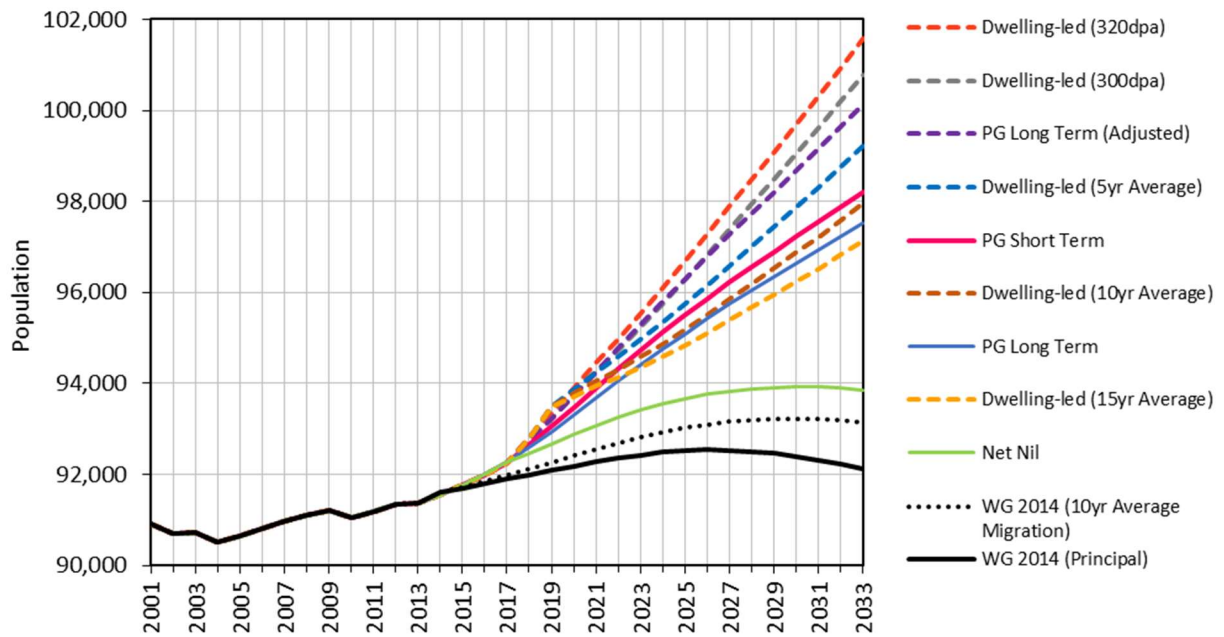


Figure 1: Torfaen population growth trajectory 2001-2033

Scenario	Change 2018 - 2033				Average per year		
	Population Change	Population Change %	Households Change	Households Change %	Natural Change	Net Migration	Dwellings
Dwelling-led (320dpa)	8,763	9.4%	4,597	11.5%	147	437	320
Dwelling-led (300dpa)	8,030	8.7%	4,310	10.8%	141	395	300
PG Long Term (Adjusted)	7,393	8.0%	3,952	9.9%	173	319	275
Dwelling-led (5yr Average)	6,416	6.9%	3,683	9.2%	130	298	256
PG Short Term	5,559	6.0%	3,402	8.5%	131	239	237
Dwelling-led (10yr Average)	5,151	5.6%	3,190	8.0%	120	223	222
PG Long Term	4,942	5.3%	3,011	7.6%	145	185	210
Dwelling-led (15yr Average)	4,340	4.7%	2,873	7.2%	114	175	200
Net Nil	1,385	1.5%	1,712	4.3%	92	0	119
WG 2014 (10yr Average Migration)	1,011	1.1%	1,430	3.6%	86	-19	100
WG 2014 (Principal)	118	0.1%	1,169	3.0%	55	-47	81

Table 1: Torfaen Demographic & Dwelling-led Scenario Outcomes 2018-2033

Note: Scenarios ranked in order of population change (%). Dwelling-led scenarios are highlighted in grey.

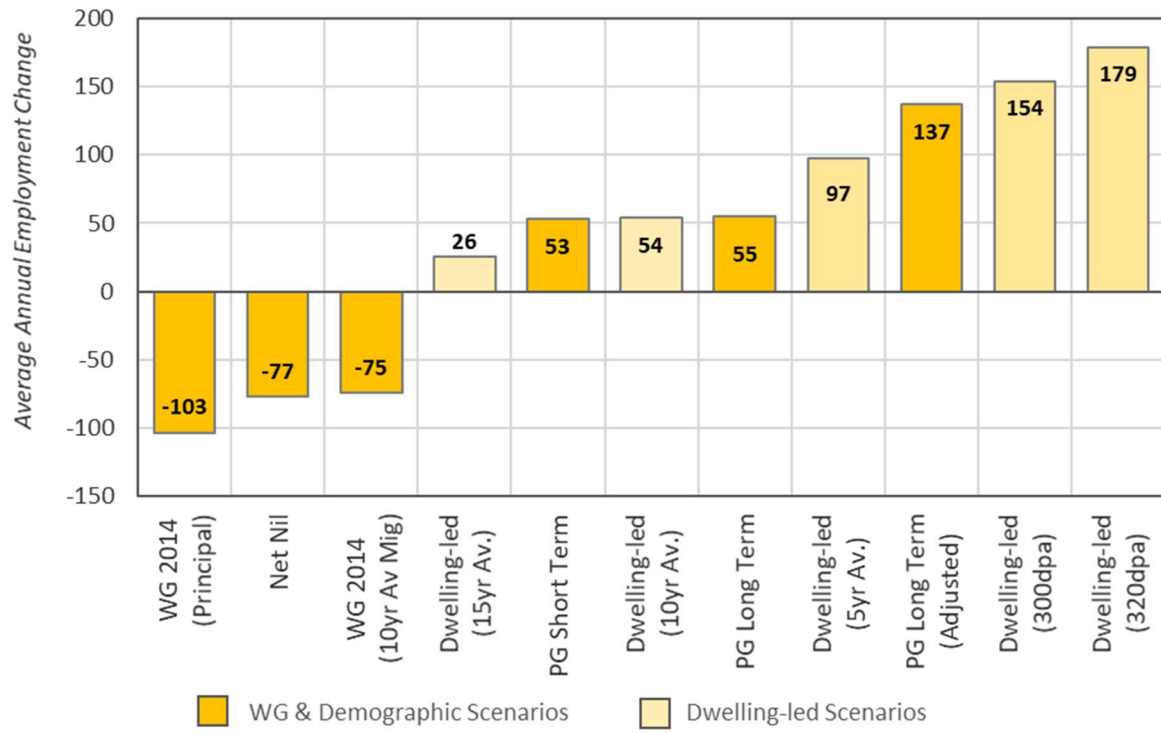


Figure 2: Torfaen – Average Annual Employment Growth 2018/19–2032/33