

Countryside Code

- Enjoy the countryside and respect its life and work;
- Guard against all risk of fire;
- Leave all gates and property as you find them;
- Keep your dogs under close control, preferably on a lead as there may be other animals along the route;
- Keep to public paths;
- Use gates and stiles to cross fences, hedges and walls;
- Leave livestock and machinery alone;
- Take your litter home;
- Help to keep all water clean;
- Protect wildlife, plants and trees;
- Take special care on country roads.

Advice for Walkers

To get the most enjoyment from walking and exploring Torfaen's varied countryside, making use of an ordnance survey map is strongly recommended. The countryside can change rapidly and way-markers can easily be missed.

Ensure that you wear appropriate clothing and sturdy footwear in case of muddy and slippery surfaces.

Walking is a perfect activity to improve your physical health; it can help your circulation and maintain a healthy heart!

Some of the paths referred to are not Public Rights of Way but are permissive paths or are across common land which enjoys open access.

Please be aware that on occasion, stiles might be replaced with alternative types of barriers. Where the text refers to a stile, this might change in the future.

Public Transport

Torfaen has a good network of public transport. To plan your journey visit www.traveline.org.uk.

Tourist Information Centre

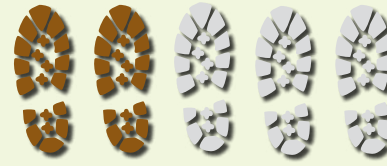
Blaenavon Tourist Information Centre provides information on days out, attractions, accommodation, activities and route planning in the area.

Tel: 01495 792615, www.blaenavontic.com

Website

For information on other circular walks in Torfaen, as well as details of the various activities in the area, visit the Countryside Services website at:-

www.countryside.torfaen.gov.uk



Difficulty of walk - 2 (easy)



BWRDEISTREF SIROL TORFAEN



YR UNDEB EWROPEAIDD AMCAN I EUROPEAN UNION OBJECTIVE I



Cyngor Cefn Gwlad Cymru
Countryside Council for Wales



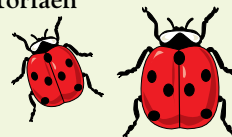
BWRDD CROESO CYMRU
WALES TOURIST BOARD

Pontypool Community Council
Cyngor Cymuned Pont-y-pŵl

Os hoffech gopi o'r ffurflen yn Gymraeg, cysylltwch â'r Gwasanaethau Cefn Gwlad Torfaen



Layout & Design by e-Graphics,
Torfaen County Borough ©2006



Cwm Lasgarn Circular Walk

Torfaen South East Wales



Explore our Countryside

Cwm Lasgarn Circular Walk

This is a circular walk, which takes you through the ancient woodland at Lasgarn Wood and the surrounding area, giving you the opportunity to explore the unspoiled woodland, varied countryside and history of Cwm Lasgarn.

We suggest that you begin at the small car park in Waterworks Lane, just off the A4043 Pontypool to Blaenavon Road in Victoria Village.

Take the steep path, which goes diagonally up through the woods. Below can be seen the Afon Lwyd, which borders the car park. Continue straight on through the woods ignoring all side tracks and paths. The many small quarries and excavations to be seen on either side of the path were probably undertaken to extract limestone for use in local ironworks and for building. Gradually the path becomes more sunken and bounded by a mixture of mosses, bilberries, heather and lichen.

A hundred yards or so further on, enter a larch plantation with stone walls on either side of a broad track. Larch is unusual amongst conifers in that it is deciduous – it loses its needles, which in autumn form a soft rusty carpet on the path.

Pass through an old gateway between well-preserved stone walls, reaching a wooden gate and stile after a short distance. Leave Lasgarn Wood via the stile crossing the

field diagonally right following the faint outline of a sunken path. The path funnels between well-maintained stone walls to reach a metal gate and stile leading onto Lasgarn Lane.

Turn left and follow the tarmac lane for about 1/2 mile, enjoying the views across the valley and the variety of trees and birdlife.

Back on the main route, you reach a gate which opens onto the mountain side of Mynydd Garn-wen. Turn left along the drive and walk into the farmyard of Garn-Wen Farm. Take the gate just to the right of the farmhouse. The house has commanding views over the countryside to the south, north and west.

Cross the stile next to a metal gate and take a route diagonally right across the field, heading towards a large beech tree with a hole in the bottom of the trunk. Pass

various ponds and excavations, keeping to the left of the group of trees. Cross the stile next to the metal gate and follow the old hedge-line straight ahead, passing through an old gateway to reach a stile. Cross this and the Nant-y-Mailor Brook just beyond. Follow the hedge uphill, heading for Pen-y-ddoyga (translates to “Head or Top of Two Fields”), a deserted farmhouse seen straight ahead from the brow of the hill. The farm was burnt down sometime this century and subsequently abandoned. The casual walker cannot help but admire those who built these square, solid dwellings set just below the windswept mountain top to claim what little shelter there is in such an inhospitable place. A living here must have been hard to make.

Turn left in front of the barn, heading downhill. Cross a stile into a larch plantation, continue quite steeply downhill and follow the well-defined path as it threads its way in and out of the trees. On the left as you descend is Nant-y-Mailor Quarry, a huge, deep chasm, now providing shelter for numerous trees. Limestone would have been extracted here for a variety of uses. Please do not go too close to the quarry edge.

The larch woods soon become broadleaved woodland again, with the Nant-y-Mailor Brook down below on the left. The Nant-y-Mailor Reservoir, which once provided drinking in the locality, can be seen ahead through the trees. It had a capacity of 4,500,000 gallons and was topped up by water pumped from disused collieries.

Follow the path downhill. Cross the next stile and walk alongside the Reservoir. Just beyond it, behind a high stone wall, are a series of filter beds, although the reservoir is now disused.

At the end of the path, turn left into Waterworks Lane and follow it down to the car park, noticing the pretty lodge house on the left and the Rising Sun Bridge on the right just before the car park.

