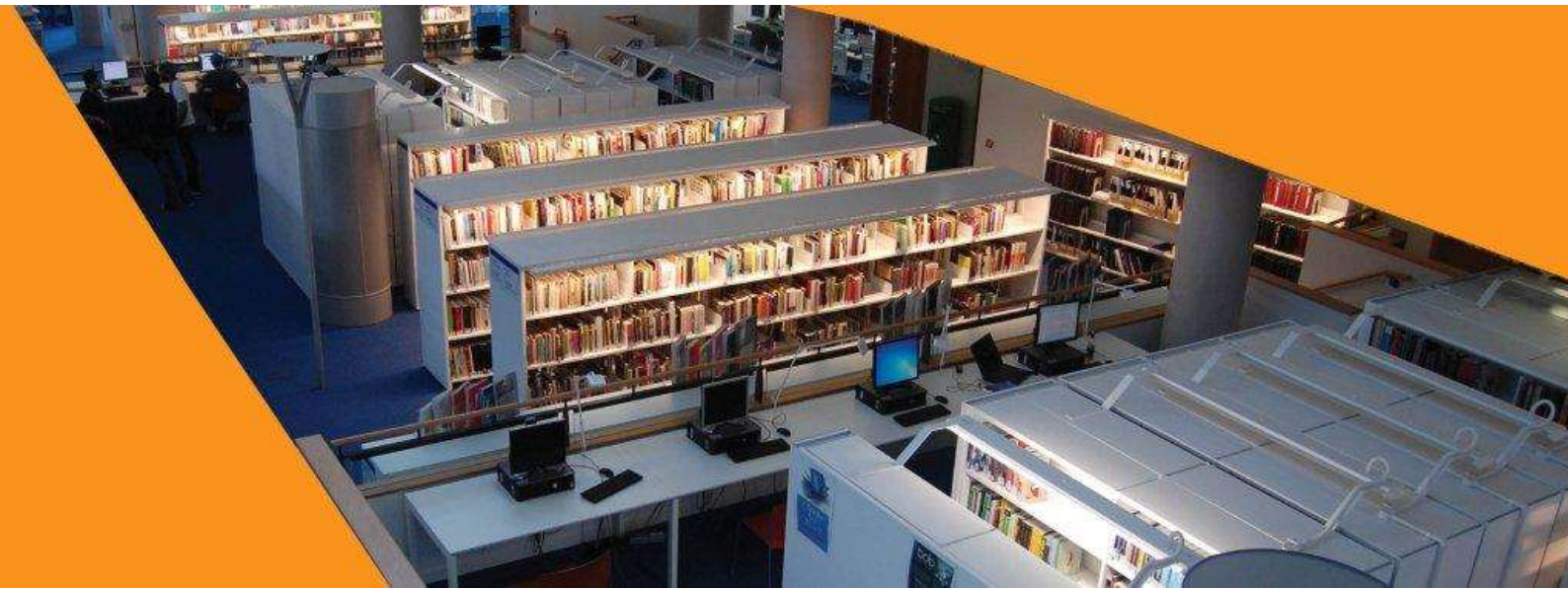




Global leaders in library self-service and automation



Solution Outline

Torfaen County Borough Council

Contents

SMARTSERVE™ 400: FREESTANDING RFID SELF-SERVICE KIOSK	3
LIBER8™ SELF-SERVICE SOFTWARE	5
LIBER8™: SELF-SERVICE SOFTWARE: INCLUDED WITHIN THE KIOSK PRICE	5
SMARTADMIN™ REMOTE MANAGEMENT	13
SMARTSERVE™ 400 ACCESSORIES: OPTIONAL	15
SMARTSERVE™ 400: RETURNS BINS AND TROLLEYS.....	15
SMARTGATE™ 300	17
SMARTGATE™ 300 : CLEAR PANEL SECURITY GATES	17
SMARTGATE™ MANAGER SECURITY GATE SOFTWARE.....	19
SMARTCOUNTER™: PEOPLE COUNT INFORMATION DATA.....	20
SMARTSTATION™: RFID STAFF STATION RANGE: SOFTWARE PRICED WITHIN PACKAGE	22
SMARTSTATION™ MANAGER: STAFF STATION SOFTWARE SUITE	23
SMARTLABEL™ RFID TAGS	26
SMARTLABEL™: RFID TAGS.....	26
ALTERNATIVE SELF SERVICE KIOSK MODEL	28
SMARTSERVE™ 200: COUNTERTOP RFID KIOSK	28

Self-Service Solutions: hardware and Software

smartserve™ 400: Freestanding RFID Self-Service Kiosk

Designed to fit within any library environment, the smartserve™ 400 kiosk has been specifically engineered to stand out sufficiently to attract attention, yet take the minimum amount of space on the floor. Perfectly capable as a stand-alone device for the borrow, renew and return of items, the smartserve™ 400 can be easily extended using our dedicated payment module to provide a full range of coin, note and card-based transactions. The smartserve™ 400 kiosk utilises a central enclosed aperture to benefit performance and reliability of multiple item tag detection on all media types. The kiosk is available in either black or white as a standard finish or any choice of colour to suit specific interior colour schemes. Usually, the customer library service is pointed to select colour and finish type from standard colour charts, provided as an additional cost, per kiosk and payment station. Alternatively, we can supply magnetic overlays where specific finishes are required. The option of an overlay is at an additional cost. Overlays allow the library to quickly and easily change the look of the smartserve™ 400 allowing it to fit in with the design and branding of the library.



Please visit the following link to view our [smartserve™ 400 demo video](#):

<http://lightbox.mybibliotheca.com/videos/h57e4337c#h5c0726f0>

Please visit the following link to view out [smartserve™ 400 360° spin](#):

<http://lightbox.mybibliotheca.com/videos/h57e4337c#h7c6ec37d>

Technical Summary

- All-in-one unit with 19" full colour touch screen monitor, integrated PC, RFID read aperture, built-in bar code scanner, integrated thermal receipt printer, cable management
- Runs with liber8™ self-service software
- Barcode (full range of symbologies), options for RFID, smart card, and manual screen entry
- RFID detection range: enclosed read aperture up to 25 standard size items

Power:

- Input C13 connector
- 240 V AC /130 watts, 50Hz, or POE
- 5 AMP fuse

Data:

- 10/100 Ethernet (SIP2) connection per kiosk

Consumables:

- Receipt Roll (thermal) (w x d x diameter core) 80 mm x 80m x 12mm

Environmental Considerations:

- EU Legislation compliant – Radio Frequency safety

- CE mark, WEEE disposable
- Very quiet operational mode
- No additional estates work required (excluding provision of power/data points if required).
- May be fixed in place by floor drilling

Dimensions (w x d x h mm) : 510 x 460 x 1443

Weight (kg) : 60.0

Product feature (technical description)	Product benefit
All-in-one freestanding unit	Takes up little space, ease of installation and secure in place, value for money self-service option.
Large, vivid 19" colour touchscreen	DDA/ADA compliant, large, touch-sensitive screen allowing for easily readable text and graphics.
Unique read aperture	Dedicated reading zone designed for maximum detection of items and to prevent cross-reads from other adjacent kiosk. Provides built-in read reliability and user privacy.
Single key-secured access door	Access to the printer and hidden USB slots for basic maintenance and on-site support.
Built in thermal receipt printer	Provides the user with a complete simple statement of items that are currently on their account.
Sound-enhanced user experience	Implements optional audible feedback and instructions to enhance the user's self-service experience.
Optional Add Ons	
<ul style="list-style-type: none"> • Smart card reader module • Smart / magnetic media case unlocking • Custom colour • Full colour magnetic overlay • Payment Station for payment of fines and fees • Side Shelf • Coordinating returns bins and trolleys 	

liber8™ self-service software

liber8™: self-service software: included within the kiosk price

liber8™ is the self-service software that customers use as the main interface on our complete range of smartserve™ self-service kiosk products. Designed to be simple and intuitive to use, liber8™ offers library self-service kiosk users a unique experience, which is both easy to learn and DDA compliant. The self-service software has been specifically designed to allow users to complete a wide range of tasks simply and quickly from one central location, including self-issue, return, renew, reservations management, payments and account functionality. liber8™ is fully SIP2 compliant and has proven integration to all major LMSs. In addition to the standard Bibliotheca theme, which has been designed as a simple high-contrast interface, the software ships complete with a package of 7 additional themes and can be completely customised via our unique design service. This service is consultative and allows the customer to contribute to the design of the interface including highlighting the configuration of screen style and purpose, text, colour, button graphic types and choices in the manner of a transaction, for example, to offer a receipt, as well as branding the interface to fall in line with their corporate look. A consultation charge applies for this service over a 3 day period. Individual configurations and amendments to liber8™ may be made via our remote management software, smartadmin™ on a single individual kiosk or estate-wide. Key liber8™ screen shots have been provided with descriptions below.

Please visit the following link to view our [liber8™ video](http://lightbox.mybibliotheca.com/videos/h57e4337c#h5c87dc78):
<http://lightbox.mybibliotheca.com/videos/h57e4337c#h5c87dc78>



Standard liber8™ welcome screen



High visibility theme welcome screen



liber8™ welcome screen showing user options to borrow, return, or go to account area.

The welcome screen also provides user configuration options along the bottom bar:

- Change appearance (select theme)
- Change language
- Change text size



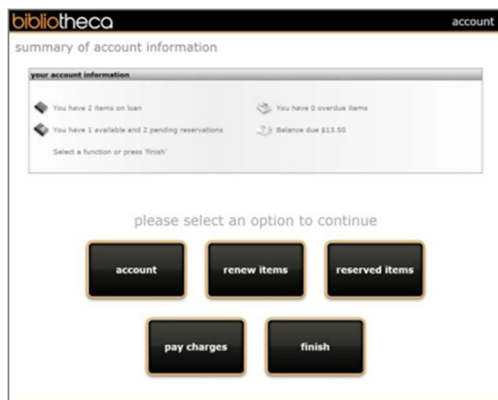
liber8™ login screen showing user ID entry by membership card or keyboard.

- Real time SIP2 transaction occurs to authenticate users for borrow and account transactions.
- Following login users may be requested to enter a PIN or Password to match detailed stored on their LMS record.



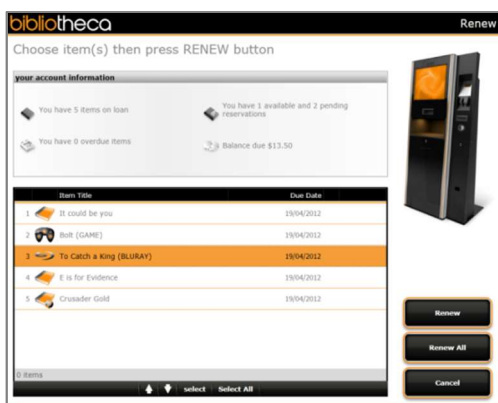
liber8™ borrow screen showing borrow instruction place items to be loaned in RFID read area.

- 'your account' information summary available on all logged in transactions
- Transaction table showing item read, media type, due date and item confirmation to confirm transaction is complete



liber8™ account area including user options to view further account detail, renew items, reserved items, pay charges, borrow or finish.

- 'your account' information summary available on all logged in transactions



liber8™ renew screen showing renew instruction to select items for renewal. Options include:

- select individual available items
- select all available items
- cancel

'Your account' information summary available on all logged in transactions.



liber8™ payment screen showing payment instruction to enter amount for payment. Payment options available can include:

- Coin, note, change, Chip and PIN, smartcard
- Part or full payment

Technical Summary

- Operating System: Windows 7
- Version Number: 6.1
- Additional Software Required: None

Data:

- via 1 TCP/IP (SIP2) Connection on each smartserve™ self-service kiosk

Product feature (technical description)	Product benefit
Attractive, clear intuitive interface and messages	Easy to learn, clear animated visual and textual instructions. DDA/ADA compliant, with special high visibility theme which exceeds usage requirements
Broad functionality	Rapid real-time transactions on borrow and return items, renew on-loan items, confirm if reserved items are ready for collection, pay fines and fees. Complete all transactions under one login.
Flexible shared service integration	Access ability to any external web-based system via simple configuration. Offers patrons an all-in-one place self-service functionality with access to mycommunity™ software and 3rd party PC booking and print management facilities. Secure and data safe access modes.
Multiple media recognition	Clear indication of the item media type being detected; differentiates between books, CDs, DVD's, Blu-ray and games if the information is in LMS system.
Customisable themed interfaces with Flexibility to incorporate customer branding and consultative custom design	8 standard themes, including a high-visibility theme for patrons with reduced vision and 3 children's themes. Design consultant available for customised interfaces at an additional cost.
Wide configuration set	Individual configurations and amendments may be made via remote management software, smartadmin™ on single kiosks or estate-wide. Fully SIP2 compliant and integrates with all major LMSs. Multi-configurable settings to meet individual library needs.
Offline mode management, transaction statistics, software update and configurations permutations via smartadmin™ including onscreen text and wording, functionality available, interface style and appearance, languages, text sizes and screen layouts	Can be configured to continue working in offline mode for lost LMS connections. Patrons may continue to borrow and return items; once restored to the LMS, all offline transactions are uploaded. Staff are alerted of incorrect upload of transactions. Offline files can also be uploaded via remote management software, smartadmin™, to allow management of whole library estate from one central location.

liber8™ main transaction screen shots



Standard liber8™ welcome screen



High visibility theme welcome screen







Theme selection pop-up



Languages selection pop-up

Standard themes package available on liber8™

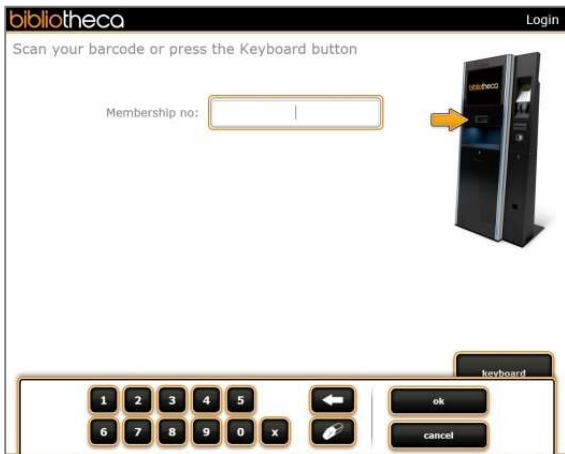
Bibliotheca Standard Theme	Blue	Yellow	Green
<p>Bibliotheca High Vis Theme</p> 	<p>Children's Theme – Ocean</p> 	<p>Children's Theme – Space</p> 	<p>Children's Theme – Jungle</p> 



Login scan barcode or press keyboard button



Login alphanumeric keyboard



Login numeric keyboard



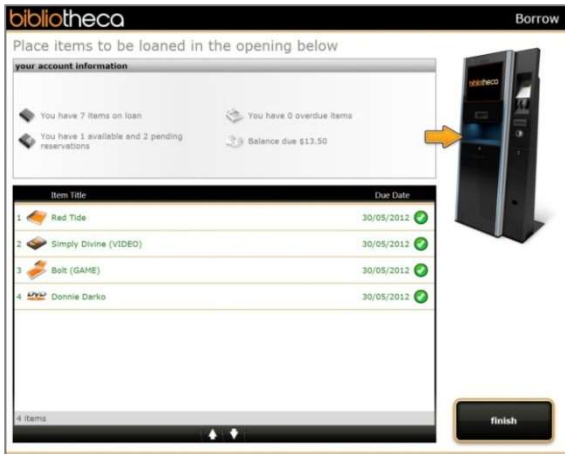
Login PIN alphanumeric keyboard



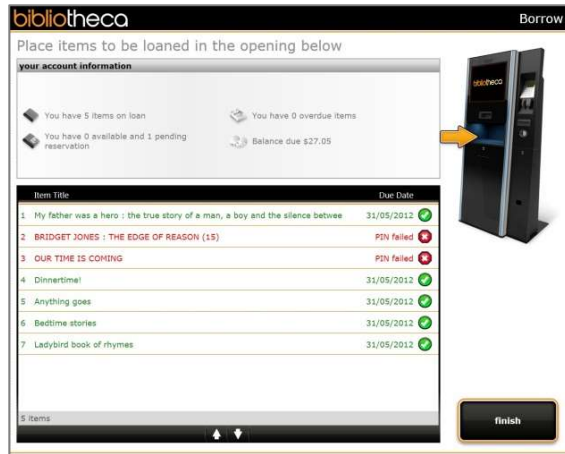
Login PIN numeric keyboard



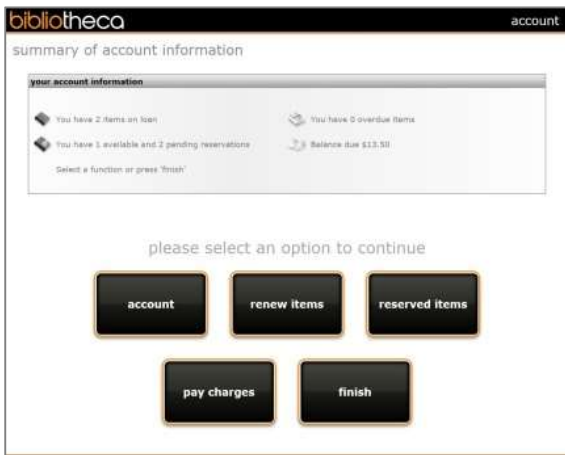
PIN required for borrow



Borrow all items successful



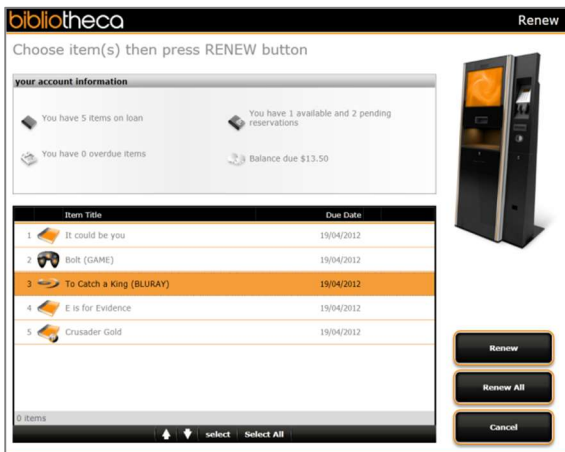
Borrow unsuccessful items



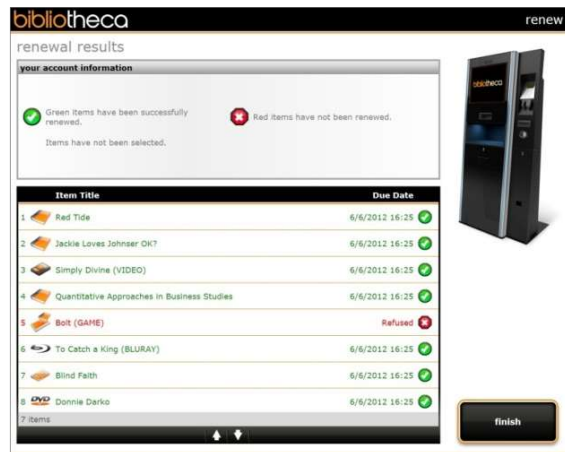
Account summary screen



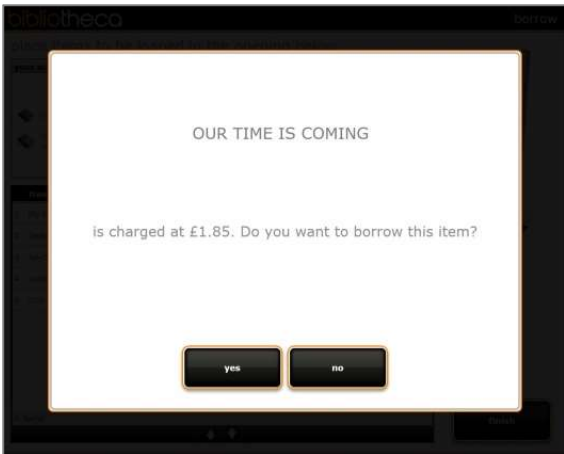
Account information screen



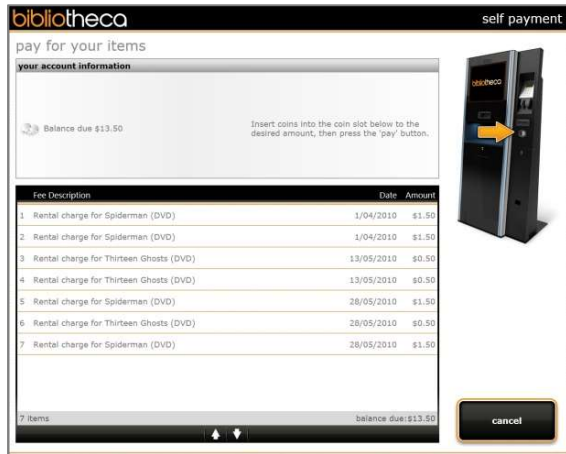
Renew select items



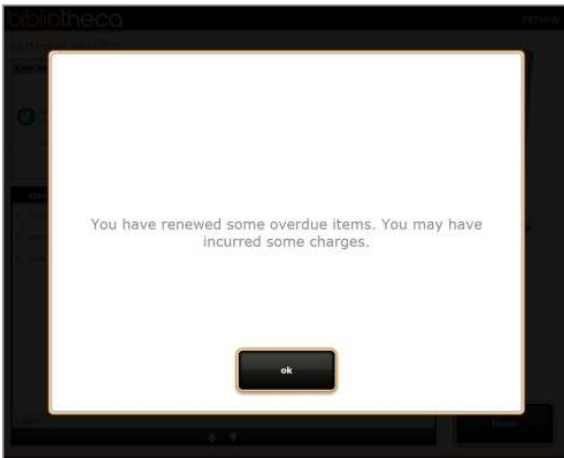
Renewal results screen



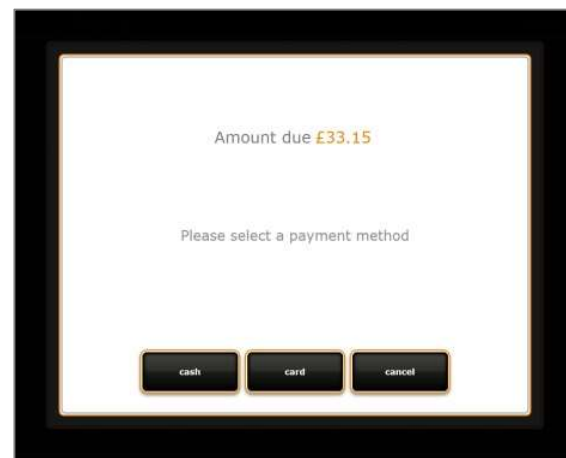
Item incurs charge proceed pop-up



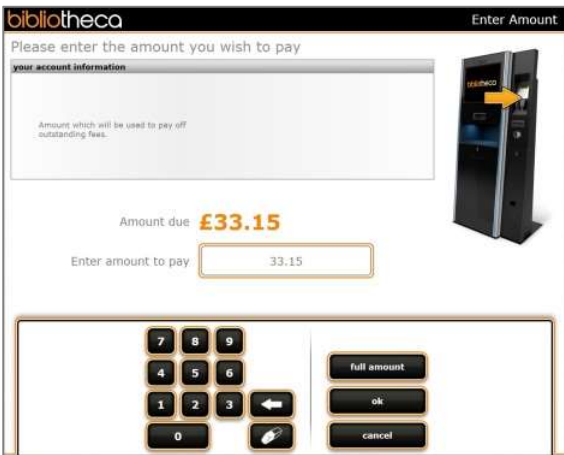
Account screen pay for items



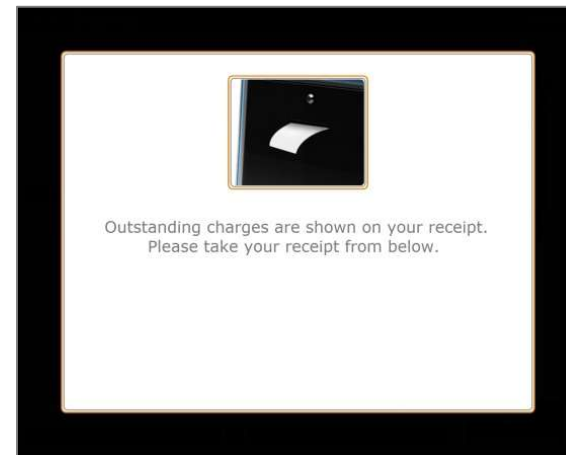
Renewed overdue items charge proceed pop-up



Amount due and payment method choice



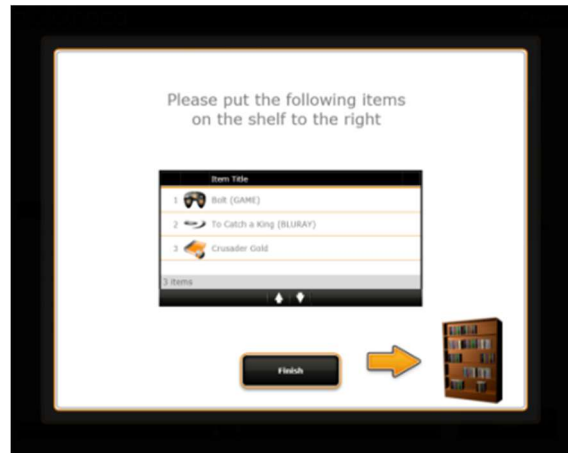
Enter payment amount



Outstanding charges are shown on receipt



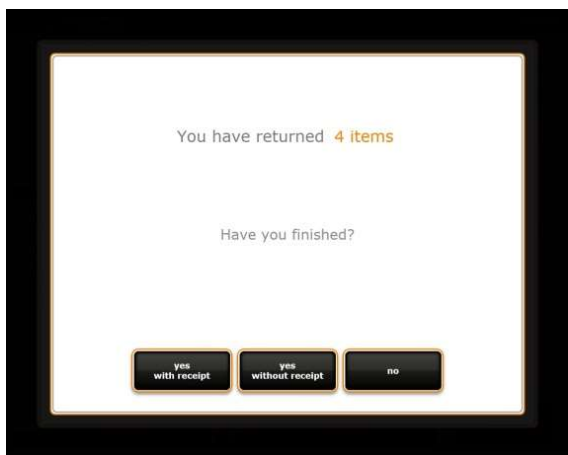
Returns handling left bin



Returns handling right shelf



Returns handling right trolley



Return complete receipt prompt

smartadmin™ Remote Management

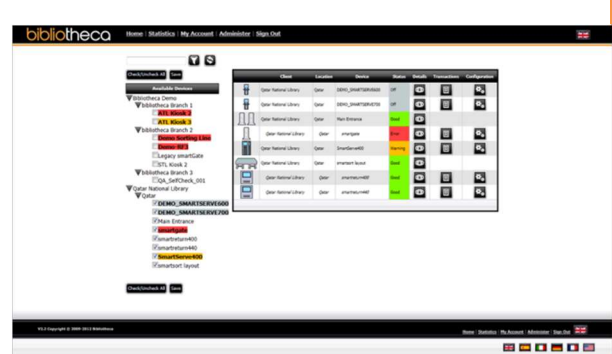
smartadmin™ : remote management software: priced per kiosk, annually over contract

The smartadmin™ system is designed to make managing your bibliotheca library devices as easy as possible. The system gathers certain data including part statuses (for example, kiosk print roll running low) and transaction details from each device as they happen in real time. The smartadmin™ interfaces then allow you to view this data in a simple to use format, giving you a one glance overview of all your devices' statuses. An external server is utilised by the smartadmin™ remote administration application. Information is updated using a 'client' initiated connection to the Bibliotheca server. The server is provided by 'Rackspace' (a hosting provider of hardware and infrastructure to multinational support solutions. The hosting service acts in a similar manner to a 'cloud' environment). There is no need to open a firewall to inbound communications. The web address <https://www.mysmartadmin.com> must be available from the device without needing to enter proxy details. This is best achieved by white listing the URL – however if you do a DNS lookup the responding IP address can also be white listed. This is done for port 443 across which all communication is done. smartadmin™ is extremely secure:

- The monitored Bibliotheca device will always initiate the connection
- Initial communication is always outbound from the library
- All transactions over secure HTTPS connection
- Hosted service with guaranteed service levels
- No personal patron transactional information is stored

Please visit the following link to view our [smartadmin™ video](#):

<http://lightbox.mybibliotheca.com/videos/h57e4337c#h5c886916>



Technical Summary

- Operating System: Web Browser Application (client OS must be Windows 7, Windows XP or

higher)

- Version Number: 2.3
- Additional Software Required: None

Data:

- Via port 443 for communications, connection made over http port 80 for server connection.

Features	Benefits
Authentication / Authorisation security system	User id/password authentication and assigned administrator access by login in-built to the system. Customers can manage security groups themselves without any need to speak to Bibliotheca.
Alerting	Email or SMS text alerts to registered users where connection to the local network is permitted. No need to be constantly logged in to be alerted of problems. Alerts can be repeatable or once per day.
Statistical data reporting tools including the monitoring of all self-service activities including payments	Clear and simple management reporting options; combines holistic statistical information of patron interactions with devices by monitoring all self-service activities proving tracked reporting
Configuration options	Multiple or single device configuration can be changed from a single source, releasing staff resources.
Management of software upgrades	Ease and speed in applying software updates.
Support access	Support access for diagnoses and resolution of issues.
Web based technology for remote monitoring	24/7 access to the interface from any workstation with internet access, to manage single or all RFID devices across an entire estate
SSL encrypted device communication for secure data	SSL certificates used to encrypt communication between the device and the server to prevent snooping by an outside body on the data being sent.
Cached device data to manage offline files	Data is held indefinitely in the event of a communication failure and then sent when communication can be re-established.

smartserve™ 400 accessories: optional

(Not priced in the proposal)

smartserve™ 400: returns bins and trolleys

A specifically designed stand-alone bin (with internal spring-loaded trolley) and/or open shelf trolley may be placed either side of the smartserve™ 400 kiosk. These can be configured to provide returns sorting options as required. The returns trolley is four wheeled and made from durable stainless steel, and is available in standard (double-sided) small size, or standard (single-sided) large or small sizes. The trolleys are supplied in black or white as standard, with custom colour options available. The returns bin housing is made from solid steel, with return slots to the front (single) or front and back (double). The returns slots have smooth action rollers at a 45° angle to assist returns. The internal returns bin trolley is spring loaded and wheeled for ease of returning items. Returns bins may also be provided in custom colours.



Options & Dimensions (w x d x h mm) :

return bin (double) : 605 x 605 x 890

return bin (single) : 589 x 600 x 872

standard double-sided open-facing trolley (small) : 600 x 450 x 1077

standard single-sided open-facing trolley (large) : 850 x 345 x 1077

standard single-sided open-facing trolley (small) : 600 x 345 x 1077

Features	Benefits
Freestanding units with double entry option	Takes up minimal space, ease of installation and secure in place. Trolleys and bins are provided with a handle for ease of mobility and for stock replenishment, increasing circulation and reducing staff time returning items to shelves. DDA accessible.
Rollered return at entry point and spring mounted bins	Provides protection to items both during and after return.
Secured design with lockable front facing door and 45 ° return chute	Allows staff access only to items once returned.
Steel Construction	Hardwearing and robust ensuring product longevity.
Bin capacity is approximately 150 standard size items	Large capacity sizes mitigating the need to constantly empty bins and trolleys.
Trolley capacity is approximately 150 standard size items	

Returns sorting configuration	Can be used with the liber8™ self-service software to direct customers where to place returns such as reserved items.
Customisable	Can be branded or made in a choice of colours or to match self-service kiosks providing continuity across libraries

Product feature (technical description)	Product benefit
Optional modular solution	Can be fitted initially or retrospectively
Sturdy mounted side shelf	Providing customers with extra space to carry out tasks at the kiosk at DDA compliant height
Durable steel construction	Hardwearing and robust ensuring product longevity
Customisable	Can be made in choice of colour or branded to match self-service kiosks providing continuity across libraries

Optional Security Solutions

smartgate™ 300

smartgate™ 300 : clear panel security gates

The Bibliotheca smartgate™ 300 security system offers an effective way of alerting staff to items that have not been correctly issued. The smartgate™ 300 offers excellence in coverage and detection for single or multiple items passing through the gate aisles in any orientation. smartgate™ 300 gate aisles feature clear, slim line panels and very small footprint installation, allowing them to blend seamlessly with their library environments. The gates may be installed with optional integrated smartcounter™ people counters. In addition our smartgate™ solutions may be installed with optional software, smartgate™ manager, which provides item level detail and audit reports of items taken through the gates without being issued as well as people counting functionality where smartcounter™ is deployed. Furthermore, smartgate™ 300 gate aisles may be linked to a range of alert mechanisms for example, to trigger lockable barriers, activate CCTV or activate visual or audio alarms. The gates in our smartgate™ range are hardwired into the system to prevent tampering from individuals trying to influence the security. The maximum configuration is 1200mm aisle separation, up to 8 gates – 9.6m.



Technical Summary

- Includes configurable built-in audio and visual alarms, optional integrated people counter, optional comms link to lockable barrier or CCTV, for example
- No software required, but runs with smartgate™ manager software for enhanced reporting
- Operating frequency: 13.56 MHz, max. transmitting power: 8 W
- RFID detection range: The gates also provide an outward coverage extending approximately 200-300mm on either side of the aisle. Where an exit width is 1,400 -1,600mm, a single aisle corridor can be provided without the requirement for an additional antenna. This allows patrons to pass on the outside of the gates and still activate alarms as appropriate.

Power:

- 13amp plastic switched boxed fused spur 240V

Data:

- 1 x standard TCP/IP (SIP2) network connection (if smartgate manager™ required)

Consumables:

- None

Environmental Considerations:

- EU Legislation compliant – Radio Frequency safety
- CE mark, WEEE disposable

- Very quiet standby mode, with excellent alarm audibility
- Energy saving standby mode, only activates when people approach the gate area
- Estates work required – floor drilling unless ramps used (and provision of power/data points if required, for use with staff PC)

Dimensions (w x d x h mm) : 70 (max at base) x 700 x 1,800

Weight (kg) : 55.0 per antenna

Product feature (technical description)	Product benefit
Sleek, slim-line clear design with small footprint	Takes up little space, ease of installation and secure in place allowing gates to blend seamlessly with the library environment
3D- Detection reads single/multiple RFID tags in any orientation	Outstanding detection rates prevent theft and ensuring accurate audit trails
Immediate Audio and visual alerts (Configurable via dip switch)	Audible alerts are useful when low staff levels in place Can be configured according to the library's environment and preferences
Multiple Gate set-up (up to 8 gates per slave)	Providing greater flexibility for wider areas
Individual aisle detection.	If an alarm is triggered, the gate can be configured to show exactly through which pedestals the theft alarm was triggered in order for staff to react correctly. Important for large entrances
Link to a range of alert mechanisms	Will trigger lockable barriers, activate CCTV or activate visual or audio alarms providing extra security
Optional smartgate™ manager	Provides item level detail and audit reports of items taken through the gates without being issued.
Radar based Integrated People Counter	Provides accurate information on footfall through the library, allowing evaluation and planning for peak periods
Malfunction Alert	Works with smartadmin™ remote management software to present an error message to library staff in the event of a malfunction or power failure. Can be configured to provide alerts to staff by email, SMS or instant messaging (where supported)
Hardwire Installation method	Prevents tampering from individuals trying to influence the security
Energy Saving Mode (Full power only when movement)	Less energy used - environmental considerations of the library
Optional Add Ons	
<ul style="list-style-type: none"> • Ramp installation (up to three gates, prevents drill installation) • smartgate™ manager providing a level of intelligence for unissued items 	

Customer Case Study : smartgate™ 300

The University of St Mark and St John, Plymouth

We have a vast range of experience deploying various gate configurations. The University of St Mark and St John, Plymouth required security gates at both of their University campuses, with the option of integrated people counters providing information on footfall through the library, allowing evaluation and planning for peak periods. In addition as part of the University's environmental objectives, the smartgate™ 400's were proposed due to their ability to run in energy saving mode, whilst maintaining a strong security deterrent.

smartgate™ manager security gate software

Bibliotheca offers an optional solution that provides a level of intelligence at the security gates. This software solution is called smartgate™ manager. smartgate™ manager can be easily installed onto any staff PC within the library and will provide item details for all of the security gates within the library setting. The software provides a level of intelligence at the security gates and enables the library service to track and alert staff when unissued items (items that have not had the security on the tag switched to an 'off' position) are taken from the library. The item information that is displayed is retrieved via SIP2 from the LMS. In addition, smartgate™ manager is able to record and show footfall of patrons within the library (if the gate aisles have been installed with smartcounter™ integrated people counters). People count information is recorded on the software interface and is updated every 2-3 minutes. The library service are able to reset people counts to shown how many people pass through the library at any set period of time. Reports can be accessed showing details of unissued items and people count information. This can be produced via our recommended remote administration software, smartadmin™. Following this the library service will be able to compile reports which can be filtered by date or time ranges to summarise reports on stock loss for audit purposes. This can then be manipulated into standard software packages such as Excel where assigned library staff are able to access and interpret the collated data. smartgate™ manager must be installed to a local PC in order for people counter data to record through smartadmin™. smartadmin™ itself is not a part of the product, but is required to access recovered people count information.



Technical Summary

- Operating System: Windows 7, .Net Framework 3.5 sp1
- Version Number: 11.0
- Additional Software Required : none, optional use of smartadmin™ for smartcounter™ solution

Data:

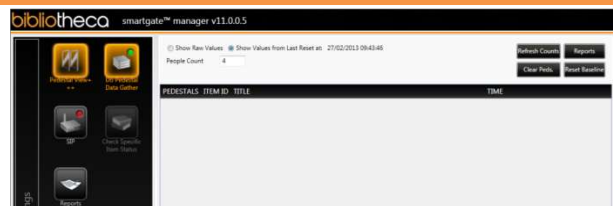
- 1 x standard TCP/IP (SIP2) network connection

Product feature (technical description)	Product benefit
Item identification and status alerts for unissued items	Enables the library service to track and alert staff when unissued items are taken from the library reducing stock loss
'Silent' alert to staff	Informed interaction with patrons, enabling staff to deal with the alert in a discreet manner
Connection to smartadmin™ remote management software	Centralised monitoring, configuration and access to stock loss reports via a web browser. Can be used to generate alerts to staff
Configurable device identification	User friendly naming of groups of pedestals (e.g. Front, Back, AV room etc.) to allow staff to easily recognise which set of gates was triggered
Multi Language option	Pedestal view display can be configured for the language of choice
Supports multiple RFID data encoding models simultaneously	Software can interpret several data models adding flexibility to libraries with multiple tag models or sharing circulation with other library systems
Offline Functionality	Available when LMS is offline
Stand-alone software solution	Deployed on a staff PC anywhere in the library with no other costs involved
Works with optional add-on integrated people counter to Displays Patron Traffic (NB smartadmin™ required for people counters)	Provides information on footfall through the library, across entire estates, allowing evaluation and planning for peak periods

smartcounter™: people count information data

smartgate™ manager is able to display people count information data from optional integrated people counters provided with the gates. This data is able to show as raw data, or data since the time of the last reset, as shown on the screen below. Historic people counter information is available to download and collate via our recommended smartadmin™ remote management software.

NB smartgate™ manager must be installed to a local PC in order for people counter data to record through smartadmin™; smartadmin™ itself is not a part of the product, but is required to access the recovered people count information. Should the library choose to install smartgate™ manager, we recommend a PC with the following minimum specification to run the



smartgate™ manager main screen showing people count information

software; Windows XP or 7 operating system or .Net Framework 3.5 sp1 server.	
--	--

Product feature (technical description)	Product benefit
Detects counts and records entries and exits	Provides information on footfall through the library, across entire estates, allowing evaluation and planning for peak periods
Simple software	Can be deployed on an existing staff PC anywhere in the library
Connection to smartadmin™ remote management software	Centralised monitoring, configuration and access to people count reports via a web browser

Staff Solution

Smartstation™ Staff Station

smartstation™: RFID staff station range: software priced within package

The smartstation™ range of staff stations provide staff with a fast and efficient means to program and verify RFID tags. Items within the library may also have their security added or removed without interaction with the LMS. This may be applied to multiple items of mixed media, placed on the antenna at any time. Additionally, using our smartstation™ manager software, our smartstation™ pads allow staff to perform multiple item issue, renew and return processes, at the staff desk using a direct link into the LMS, even down to the ability to print receipts for the customer. smartstation™ 100 is our basic model, with smartstation™ 200 being fully side shielded to give optimal read performance.



Technical Summary

- Both models include RFID reader, antenna, serial cable, power supply, may be used with optional receipt printer, USB connection to staff PC, optional barcode scanner can be provided
- Both models run with smartstation™ manager software suite
- Minimum RFID detection range: 200mm or 7-10 standard size items.

Power:

- Both models supplied with a localised plug-in supply (240v). The RF power output is 1.2 watt and the reader conforms to CE regulations.

Data:

- RFID reader connects to staff PC via USB

Consumables:

- Receipt Roll for optional receipt printer (thermal) (w x d x diameter core) 80 mm x 80m x 12mm

Environmental Considerations:

- EU Legislation compliant – Radio Frequency safety
- CE mark, WEEE disposable
- Very quiet operational mode
- No additional estates work required (excluding provision of power/data points if required, for use with staff PC)

Dimensions (w x d x h mm) : 100 / 200 Antenna: 340 x 240 x 10 Reader: 145 x 85 x 27

Weight (kg) : 100 / 200 Antenna: 0.5 Reader: 0.2

Product feature (technical description)	Product benefit
Focused, accurate read area with minimal bleed	A mimimised antenna 'bleed' area and a concentrated detection field, means that only items placed directly on the smartstation antenna will be detected

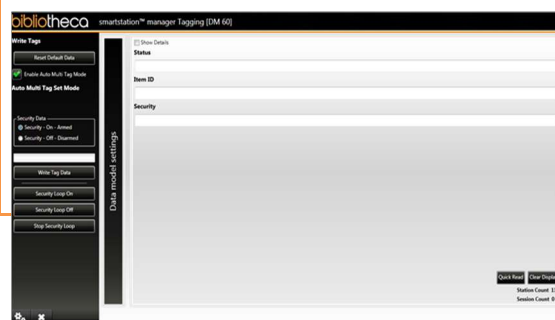
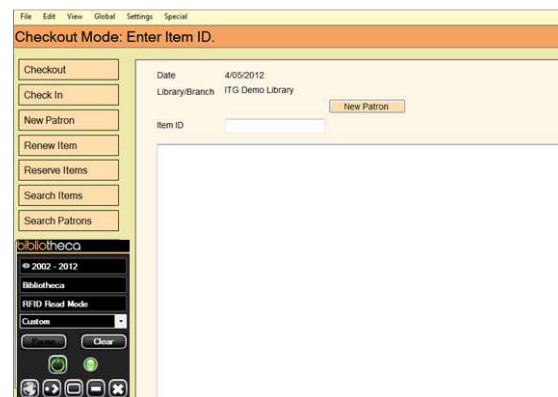
compact clear panel design	smartstation 100 & 200 are approximately A4 in size, allowing you to work discreetly in small spaces. The smartstation 300 antenna is A3 in size to accommodate more library items.
File transfer direct to LMS	Updates the LMS in real time
Receipt facility Feature	Ability to provide a receipt through an existing printer
Seamless compatibility	Designed to purchase additional hardware as fully compatible with existing circulation desk computers, scanners and printers
Multiple read capacity	Can read multiple stacked items of varying size, weight and thickness saving staff time.
Software functionality for issue, return, back office and tagging functions	An all in one solution for staff use
Optional Add Ons	
<ul style="list-style-type: none"> • Desk based receipt printer • Barcode scanner with stand • Touch screen PC interface optional side shielded model • Optional side shielded model 	

smartstation™ manager: staff station software suite

The smartstation™ is provided with two software applications, smartstation™ manager tagging used for the stock conversion process and smartstation™ manager circ which is primarily used for staff issue, return and renew.

smartstation™ manager circ is a simple local application that retrieves the barcode data from RFID enabled items placed on the staff workstation and then passes information directly to the LMS. When RFID items are placed on the smartstation™ antenna, barcode information is transmitted to the LMS for display in the registered field within the client interface, with updates to the item and patron status made respectively. The process in using the application is very simple, with staff provided the benefit of speed of transaction and ease of transaction handling.

smartstation™ manager tagging provides the library service with a quick and easy way to tag and convert stock items, taking around five seconds physical time per item to complete. smartstation™ manager tagging does not require any communication with the LMS, therefore



allowing staff to carry out the conversion process anywhere in the library, speeding up the tag programming process significantly. Tags can be programmed as quickly as library staff can place the item on the reader, scan the bar code, and check the field on the PC to check whether the action was successful.

Technical Summary

- Operating System: Windows 7
- Version Number: 10.0
- Additional Software Required: RFID Reader Driver
- Minimum required PC spec:
 - o Pentium
 - o 64 MB RAM
 - o 20 MB free disk space
 - o Spare USB port (for connecting RFID hardware)

Data:

- Connected via Staff PC / LMS interface. The PC may be connected to the network according to local preference.

Product feature (technical description)	Product benefit
smartstation manager circ	
Issue, return, renew and back office operational functionality software on staff PC	Multi-functional all in one unit with Ease of installation and integration with existing back office systems and LMS
Drop down method to select security status.	Simple, Quick and easy to use
Sits within LMS client interface	Ease of use whereby the software sits directly within the LMS interface, mitigating the need to open and close software programmes
Offline file transfer where supported by LMS	Can be used when not connected to the LMS and the LMS is offline
Audible and visual alerts	RFID enabled items placed on the staff station are displayed within the client interface immediately, with updates to the item and patron status made respectively.
Reliable and accurate item detection	Barcode data is retrieved straight from the RFID enabled items; 'circ' then passes information directly to the LMS.
Ease of data entry	The process of using the application is very simple, providing staff with the benefits of speed, and ease of transaction handling.
Barcode digit check	To prevent erroneous conversion
Error diagnostics and count reports	Allows the library to access and report on the activity of each staff station, including issue/return statistics
Can be used with web hosted and remote LMS systems.	Provides reassurance over emerging standards such as web services



Allows and detects item IDs from multiple data models (30+)	No restriction if collections are of different data model type for example; neighbouring libraries
Transmits data into any LMS with bar code input	Allows the RFID application to interact with LMS systems - even those that it has never encountered,
Can detect popups thrown by most non-hosted LMS systems	Allows more than one item at a time to be successfully used with LMS systems designed for one at a time usage: This allows us to pause transmission of multiple item IDs (allowing more than one at a time items to be used). By detecting the popup we can pause transmission until the user has interacted with the LMS popup and then the user can hit an Fkey to resume transmitting any queued items without blasting through the LMS popup.
Several methods to determine security state to write	Staff do not need to select anything to indicate security state: For most LMS systems the application can use either windows form captions, F key presses within the LMS, or background SIP operations to determine the security status
Warns staff of potentially missing parts of an item	Eliminates the need to check for completeness. If multi-tag set feature is used, a popup alerts when all tags expected for a set are not detected
F key resumes application when it pauses for popups	If the transmission of item IDs to the LMS is paused due to LMS popups, simply clicking the F key resumes and speeds up the circulation process
Easy to understand visual cues and operating methods	In normal operations staff simply need to 1) Place item(s) on pad 2). Wait for security colour to change 3). When security write colour changes back, remove stack.
smartstation manager tagging	
No Requirement for connection to the LMS	Allows flexibility to carry out conversion anywhere in the library, speeding up the tagging process significantly
Simple conversion process	Tags can be programmed in a matter of seconds, just by placing the item on the antenna and scanning the barcode.
Single and multi-item tag conversion	A 'Multi Tag Set' feature, allows staff to write multiple tags (for one item set) simultaneously.
Reporting tools	May use to identify efficiencies across teams undertaking tagging

RFID Consumables:

smartlabel™ RFID tags

smartlabel™: RFID tags

The smartlabel™ range of tags supplied by Bibliotheca are fully compliant to ISO15693 operating at 13.56MHz. We provide re-writable tags; each tag is provided with a performance guarantee and capability to provide over 100,000 read/write operations. This may alternatively be expressed as an approximate ten year life-span. This assumes tags have been applied to items kept within conditions between 15 – 25 degrees of 40 – 60 % humidity. All tags are taken through a rigorous Inspection Quality plan to ensure consistency and operation to specification. We constantly review our processes and operations with a continual feedback mechanism designed to refine and improve our services and products. For instance, we select our suppliers after an intense qualification process to ensure the performance and yield of incoming raw materials. We closely work with our antenna and IC bonding adhesive suppliers and continuously improve our technology to ensure product quality and reliability. Bibliotheca are able to provide a full range of RFID library tags suitable for use with all book types, audio-visual materials and rare or antiquarian items, and recommend the smartlabel™ 200 book tags for core paper based collection tagging. Our full range of RFID tags is summarised below.

<p>smartlabel™ 200</p> 	<p>For books and magazines</p> <ul style="list-style-type: none"> • White facestock paper • 1,000 units per reel • 100% minimum yield • NXP ICODE SLIX • Aluminium antenna • 32 bit password protection 	<ul style="list-style-type: none"> • Standards: ISO 18000–3, ISO 15693, ISO 28560-2, CE • Operating Frequency: 13.56 MHz • Total memory: 1024 bit / 32 blocks • IC Write Endurance: 100,000 Operations • Data Retention: 50 Years 	<p>Dimensions (w x d x h mm)</p> <p>81 x 49 x 0.46</p>
<p>smartlabel™ 500</p> 	<p>For high value assets</p> <ul style="list-style-type: none"> • High visibility orange glossy acrylic • NXP ICODE SLIX • Ferrite core copper antenna • 32 bit password protection 	<ul style="list-style-type: none"> • Standards: ISO 18000–3, ISO 15693, ISO 28560-2, CE • Operating Frequency: 13.56 MHz • Total memory: 1024 bit / 32 blocks • IC Write Endurance: 100,000 Operations • Data Retention: 50 Years 	<p>Dimensions (w x d x h mm)</p> <p>132 x 5 x 26</p>

Environmental Considerations:

- non WEEE disposable, but recyclable where metal content can be removed sufficiently; smartlabel™ 500 non-recyclable.
- Very long life and extensive read / write performance

Product feature (technical description)	Product benefit
High Frequency 13.56 MHz	Providing optimum performance working with self-service and security solutions even when placed on or near metallic objects

100,000 read/write operations with 50 year Data Retention	Long-life, value for money solution with lifetime guarantee
Standalone product which works with existing RFID equipment	No other hardware or software required. Can be easily deployed just by writing the tag and fixing to the item
Fully Compliant to standards <ul style="list-style-type: none"> • ISO 18000-3 • ISO 15693 • ISO 28560-1 	Ensures complete peace of mind when working with Non-Bibliotheca solutions
Optional Add-ons:	
<ul style="list-style-type: none"> • AFI set-up per tag • overprinting per tag • programming per tag • Tamper evident overlay per tag 	

Alternative self service Kiosk Model

smartservice™ 200: Countertop RFID Kiosk

The smartservice™ 200 countertop kiosk is designed to sit on top of a library-supplied counter or desk. With RFID embedded in the base surface of the smartservice™ 200, items are read instantaneously. smartservice™ 200 has a minimal visual impact and footprint and will complement the interior of your library and blend with existing furniture, and though the standard finish is black or white, custom finishes are also available. During the RFID conversion period, smartservice™ 200 can be used as a barcode only self-service solution (without address to item security). smartservice™ 200 is available with a 17 or 22" full colour touch screen.



Please visit the following link to view our [smartservice™ 200 video](http://lightbox.mybibliotheca.com/videos/h57e4337c#h7d348991):
<http://lightbox.mybibliotheca.com/videos/h57e4337c#h7d348991>

Technical Summary

- All-in-one unit with 17" full colour touch screen monitor with integrated PC, embedded RFID antenna and reader, built-in bar code scanner, receipt printer, and built-in cable management
- Barcode (full range of symbologies), options for RFID, smart card, and manual screen entry
- Runs with liber8™ self-service software
- RFID detection range: up to 200mm or 7-10 standard size items

Power:

- 110 - 230 V 50 - 60Hz / Ethernet
- IEC Inlet socket
- 5 Amp supply

Data:

- 1 RJ45 Socket for Ethernet Network Connectivity (SIP2) connection per kiosk

Consumables:

- Receipt Roll (thermal) (w x d x diameter core) 80 mm x 80m x 12mm

Environmental Considerations:

- EU Legislation compliant – Radio Frequency safety
- CE mark, WEEE disposable
- Very quiet operational mode
- No additional estates work required (excluding provision of power/data points if required)

Dimensions (w x d x h mm) : 560 x 530 x 590

Weight (kg) : 20.0

Key Features

17" full color touch screen

Key Benefits

Generously sized touch screen (upgradeable to 22") that allows advanced functionality and user-friendly operation

liber8™ self-service software

Intuitive, enhanced user experience for patrons when

	using liber8™ software and touch screen interface
DDA and child accessible	DDA compliant to meet library service accessibility requirements and is ideal for children's areas
All-in-one unit that takes up little space	Small footprint for flexible deployment and to maximise library space
Ease of access for library staff	Single key-secured access front panel to change paper in the integrated thermal receipt printer or other tasks as needed
Available in white or black	Customisable to match library interior or organisation branding
Multiple options for patron ease-of-use	Patrons can pay fines and fees at the kiosk if functionality is added. Patrons can also scan their smartphones at the kiosk, with the addition of a 2D bar code scanner
Barcode only checkout option	Ideal if the Library likes the look of the kiosk, but isn't ready to move to RFID
Optional Add-Ons	
<ul style="list-style-type: none"> • PCI compliant Fines & Fees options (only US deployments) • Available in black or white • Magnetic media case unlocking • Custom liber8™ themes • Smartcard reader module (placed in the base of the unit) 	